

EXI-300 Inverted Microscope

Infinity Corrected Plan Phase Optics,
Variable LED Koehler Illumination
& Two Photo Ports

INVERTED
BIOLOGICAL
& TISSUE CULTURE
MICROSCOPE
IDEAL FOR
TEACHING, CLINICAL,
LABORATORY APPLICATIONS



Delivering quality through vision

EXI-300 Inverted Microscope

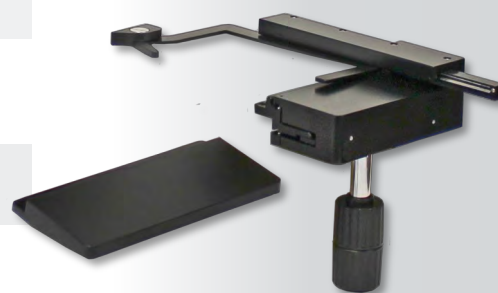
ACCU-SCOPE's new EXI-300 Inverted Microscope is *the* standard choice for observing cell and tissue cultures.



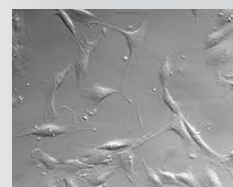
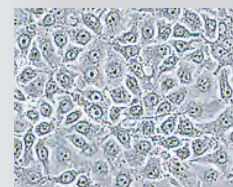
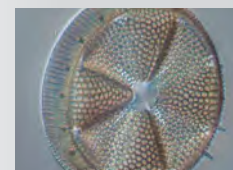
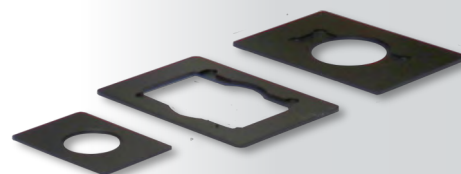
Shown with optional mechanical stage & Lumenera® camera

SPECIFICATIONS

Viewing Body	Trinocular viewing head, inclined 45° Light distribution: binocular 100%, binocular/trinocular 80%/20% (upper port), trinocular 100% (lower port)
Optical System	Infinity optical system, f = 200mm, anti-mold
Objectives	Standard configurations include Infinity Corrected LWD Plan 4x, and LWD Plan Phase 10x and 20x (Optional 40x available)
Eyepieces	WF10x/20mm focusable eyepieces with eyeguards (Optional 15x and 20x eyepieces are available)
Nosepiece	Side facing quintuple nosepiece
Focusing System	Coaxial coarse and fine focusing system with adjustable tension control
Stand	Cast alloy aluminum
Stage	Fixed, hard-coated plain stage size 170mm x 230mm with glass insert plate (Optional attachable mechanical stage, right hand coaxial control, movement range 120mm x 78mm with torque adjustment & coaxial control at front of stage, and auxiliary stages 70mm x 180mm (pair), Terasaki, \varnothing 35mm petri dish and \varnothing 54mm glass slide holders are available)
Condenser	ELWD condenser, N.A. 0.3, W.D. 72mm with pre-centered phase slider with 10x, 20x & 40x annuli, BF & filter slot
Illumination	5 watt LED Koehler with variable intensity control; LED bulb is rated for over 25,000 hours of continued use; universal power supply 110-240v
Accessories	Dust cover, instruction manual included
Warranty	5 year limited warranty for parts, labor and electronic components; 1 year warranty on LED bulb



Options include: (Above L-R) Auxiliary Stage & Mechanical Stage. (Below L-R) petri dish holder, glass slide holder & terasaki holder.



Design, features and specifications are subject to change without notice.

ISO 9001

Certification

Design and production adheres to ISO 9001 international quality standard.

ISO 14001

Certification

Design and production meets the Requirements of international standard ISO 14001 for environmental management.



73 Mall Drive • Commack, NY 11725
631-864-1000 (P) • 631-543-8900 (F)
email: info@accu-scope.com • www.accu-scope.com

V.102215:JPM